



# Road Transport

## How to protect a parked vehicle?

Three quarters of land freight thefts are committed when a vehicle is stationary. The three most common types of theft are:

- **“Cut & run” theft after laceration of the trailer cover (more than 60 thefts declared every night in France for example),**
- **Theft of a loaded vehicle,**
- **Armed robbery.**

To comply with labor and safety regulations, almost half of international freight journeys made by road require that the driver park for a period in order to rest. Ideally secured truck parking areas are preferred however availability of these types of facilities is limited.

According to a recent study in Europe, out of fifty of standard truck parking facilities reviewed, only nine were considered as safe. Alternative measures must be taken if secure parking is not available.

## How to ensure a secure vehicle parking.

- Select appropriate parking sites and facilities prior to travel.
- Ensure that the vehicle is adequately prepared for secure parking.
- Apply a procedure to park safely

The level of security provided should be adjusted depending on the value of the goods being transported. In order for this to happen the carrier and the driver need to be advised regarding the nature of the goods being transported in order to allow them to make appropriate decisions on the level of security required. We suggest three levels of security: **basic**, **intermediate** and **strengthened**.

### 1 Which parking areas to choose?

#### 1.1. Plan the steps

The operator should systematically study the route and select / agree the stops with the driver taking into account driver facilities (toilets, showers, cafeteria... ) as well as provision of adequate security measures.

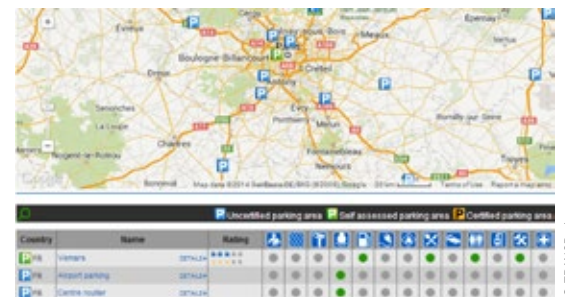
This is a key factor for the comfort of the driver and to make sure that the driver will not chose another (more convenient) location.

**Basic level:** parking area address recommended, free parking schedules.

**Intermediate level:** parking area address imposed, free parking schedules.

**Strengthened level:** parking area address compulsory, imposed parking area schedules.

Some websites allow you to review parking area facilities to assist in planning your trip.



© TRANSPark



<b>Esporg</b>	<a href="http://www.esporg.eu/">http://www.esporg.eu/</a>	
<b>TRANSPark (IRU)</b>	<a href="http://www.iru.org/transpark-app">http://www.iru.org/transpark-app</a>	
<b>Truck inform</b>	<a href="http://www.truckinform.eu/">http://www.truckinform.eu/</a>	

## 1.2. Study material and human protection devices

### Basic level:

- Deterrent lighting to identify malicious people.
- Geographical area « well attended ».
- Access to parking area limited : fences and access roads restricted.

### Intermediate level:

- Dedicated area for trucks
- Lighting covering the entire surface of the parking area and its direct access.
- Fencing above 2 meters.
- CCTV in place.

### Strengthened level:

- Exclusive dedicated area for trucks (>19 tons).
- Fences and security barriers above 2,60 m height.
- Dual access between the trucks in/out with automatic gates.
- Controlled pedestrian entry.
- CCTV coverage of entire area (including waiting area).
- Guardhouse at the entrance of parking with security officers 24/7.



© stepos

*Particular case* : **For parcel transport vehicles** (recurrent circuits and frequent stops), the driver and the consignee should identify areas of delivery to minimize the distance from the driver to his vehicle. The addition of a “watcher” besides the driver should be considered if the distance between the vehicle and the delivery point is excessive, or if the delivery area is vulnerable.

## 2 Prepare and equip the vehicle for stop overs

Because cargo thefts are often the act of gangs, best practices will avoid making you a potential target!

### Basic level:

- Place seals on the doors and verify their integrity before and after leaving the vehicle. (refer to TechC@RE Risk Focus «Placing seals »).
- Ensure that the keys are not identifiable: tractor brand, name of the transport company, vehicle ID...
- Never leave or hide the keys inside or on the truck, even for brief stops.
- Do not leave any visible personal belongings (cell phone...).

### Intermediate level:

- A «cargo van», semi box trailer vehicle or the addition of an anti-laceration trailer cover should be considered depending on the nature of the cargo.
- The vehicle should remain anonymous and should not draw attention or give any indication as to the value or nature of the goods being transported.
- Securely lock the doors of the trailer.
- Equip the delivery vehicle with doors and locks reinforced by focusing on tilting closing system.



© Mécélux

© www.procar-demas.fr

### Strengthened level:



© Gobillot

- Add anti-restart system or a remote controlled speed reducer.
- Use an anti-theft kingpin if the trailer is uncoupled from the tractor.
- Monitor the vehicle or preferably the goods with real-time geolocation. The movements are subjected to alert criteria: route and parking geo localized, time slots, door opening ... The alerts should be managed by a professional security company 24/7.
- Put reinforced glass and alarms (audible and visual) in door openings (tractor and trailers).



## 3 Apply a procedure to park safely

### Basic level:

- Do not leave a loaded vehicle parked the day before departure (or Friday night with a departure on Monday morning). If this is not possible, the vehicle should be immobilized, locked and guarded depending on the sensitivity of the goods.
- Lock the doors of the tractor and the trailer every time the vehicle is left unattended (when re-fuelling, during rest periods ...).
- After each stop, check for possible signs of tampering or alteration, burglary (trailer cover, locks, doors, seals...) on the vehicle.
- Be careful of people spontaneously offering their help.
- Instruct drivers not to disclose to anyone the nature of the cargo, route or planned stop over locations. Even on the social network.



**Intermediate level:**

- Avoid regularly using the same routes or stopping at the same areas if they are not selected for their safety level.
- During parking operation, locate the back of the vehicle against a wall, a solid fence, pole or another truck (back to back) to prevent access through the rear doors.
- Do not pick up any unauthorized passenger in the vehicle.

**Strengthened level:**

- The driver must have an agreed route, areas of parking and specified schedules to meet within an agreed and signed (by the driver) procedure. Periodic checks should take place to allow the proper monitoring of compliance with these instructions.
- Security equipment deficiencies must be reported immediately by the driver to a manager available 24/7.
- Provide the driver with guarding procedures if the vehicle is inadvertently stopped with a sensitive load (accident, breakdown, event...).

TAI Company for example, can be contacted for help:

<http://www.truck-assistance-international.com>



**Warning : Standard police controls are not made on the emergency lane.  
This is a modus operandi observed by fake policemen.**

## Always plan parking of your vehicle!

- ✔ Anticipate and select parking areas
- ✔ Adapt vehicle selection and configuration for secure stops
- ✔ Write and disseminate procedures to enhance the safety of the vehicle at standstill

**By reducing the risk of theft you protect not only the goods but also the reputation of your company**



**However if, you are a victim of a robbery, neither put your own life at risk, or the lives of any others by acts of heroism.**

- **Stay calm** and obey instructions carefully.
- If you are a victim or witness, operate the vehicle **horn** to alert the neighborhood.
- **Look carefully** (but discreetly) at your aggressors (physical, clothing, weapons, means of transport, etc.) to be able to provide an accurate description.
- **Initiate police response quickly** by dialing **112** (emergency telephone number for Europe).
- **Ask witnesses to wait** for the police or write down their **identities** and **addresses**.
- Where possible **protect the evidence** on the crime scene.
- **Do not touch anything** that has been handled or abandoned by criminals and avoid evoking the case with third parties, to avoid any confusion.

In any case file a complaint to the nearest police station



# Road Transport

## How to protect a parked vehicle?

**BEST  
PRACTICES**